

We are trying to set up a drive space monitoring alert on our client computers, in order to get an automatic e-mail message being sent when someone's hard drive usage exceeds 95%.

I set up the alert ruleset according to "Best Known Method for Monitoring, Alerting, and IPMI" (using the given "**Monitor**"-"**Drive space**" alert and "**send E-Mail**" action) and distributed it to a test computer.

I successfully tested the sendmail functionality with other alerts like "**disk configuration**" and "**Service montior**".

The "**drive space**"-alert however doesn't work at all. I filled the C: drive with data up to 99.9%, but no alert seems to be triggered. I checked the local "**alert.log**" file in "C:\Program Files (x86)\LANDesk\Shared Files" - no new entries.

Someone here got this alert to work or does have any idea what I might be missing?

My test computer:

Computer OS: Windows 7 Enterprise x64 SP1

Agent Version: 9.5.1 SP2 (Real-time inventory and Monitoring activated)

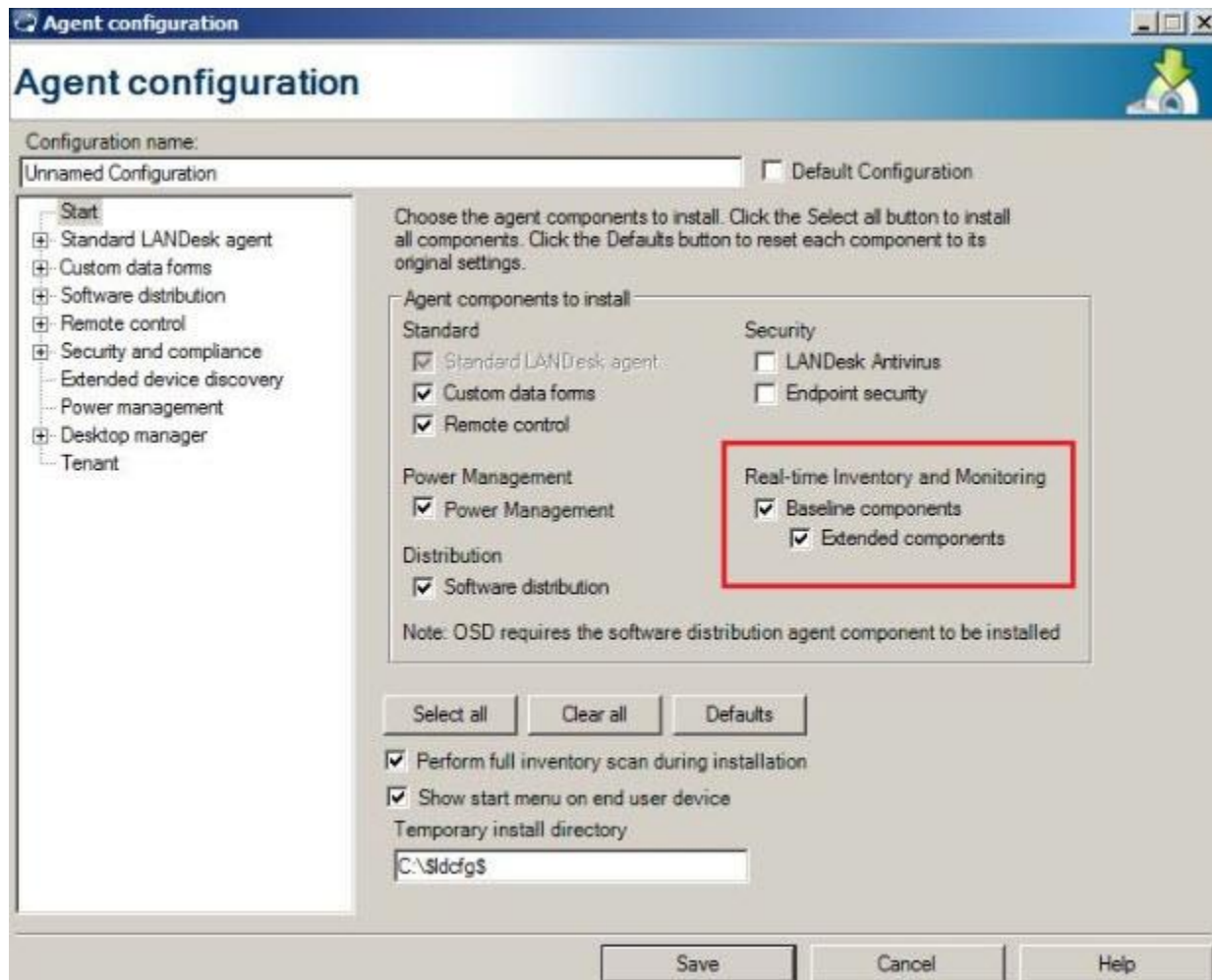
.NET Framework 4.0.30319

You will need to make sure that Realtime Inventory and Monitoring is enabled in the agent for this

With extended

Realtime monitoring with extended components is activated.

I also created a totally new agent configuration with this options activated and installed it on the test computer.



Validate that lddrives.exe is running that is what triggers the alerts

[How to turn on logging for Collector.exe \(Real time inventory and monitoring\)](#)

I turned on logging for Collector.exe as described.

This is what I got after a restart:

2015-09-17 08:43:45.000004(3288) :App name is [LDdrives.exe]

2015-09-17 08:43:45.000055(3288) :Verbosity level is 00ff

2015-09-17 08:43:45.000076(3288) :Arg:0,LDdrives.exe

2015-09-17 08:43:45.000094(3288) :Arg:1,-p

2015-09-17 08:43:45.000111(3288) :Arg:2,51205

2015-09-17 08:43:45.000126(3288) :Arg:3,-c

2015-09-17 08:43:45.000142(3288) :Arg:4,-s

2015-09-17 08:43:45.000157(3288) :Arg:5,-f

2015-09-17 08:43:45.000173(3288) :Arg:6,-V255

2015-09-17 08:43:45.000189(3288) :Arg:7,-lc:\lddrives.log

2015-09-17 08:43:45.000285(3288) :Unicorn::TheOne acquired unique event

2015-09-17 08:43:45.000330(3288) :Stats not requested

2015-09-17 08:43:45.000377(3288) :Server started

2015-09-17 08:43:45.000401(3288) :MonitorServer::SetupListenSocket

2015-09-17 08:43:45.000762(3288) :STDIO phase skipped

2015-09-17 08:43:45.000840(3288) :TCP/IP phase started

2015-09-17 08:43:45.000870(3288) :Signal requested

2015-09-17 08:43:45.000884(3288) :Trying to OpenEvent [landesk.provider.accept.event.51205]

2015-09-17 08:43:45.000902(3288) :Sync Signal sent

2015-09-17 08:43:45.000915(3288) :WindowsInternalSelect calls WSAEventSelect

2015-09-17 08:43:45.000929(3288) :WindowsInternalSelect calls WSAPoll (2 items)

2015-09-17 08:43:45.009945(3288) :WFMO gets rv 1

2015-09-17 08:43:45.009982(3288) :Select returns ACCEPT SOCKET CONNECTION

2015-09-17 08:43:45.010123(3288) :MonitorServer::AcceptConnection

2015-09-17 08:43:45.010190(3340) :StatusPage::SendPIDMessage

2015-09-17 08:43:45.010192(3288) :MonitorServer::FindPage(/index)

2015-09-17 08:43:45.010220(3340) :MonitorPage::SendESCommand Requesting document:
/inventory?file=LDdrives.exe&pid=3284

2015-09-17 08:43:45.010246(3288) :Accept connection executes in master process/thread for
page /index

2015-09-17 08:43:45.010377(3288) :IndexPage::Initial index page request from collector

2015-09-17 08:43:45.010399(3288) :IndexPage::Get index page requested

2015-09-17 08:43:45.010521(3288) :MonitorServer::LateProviderInitialization

2015-09-17 08:43:45.010539(3288) :LateInitialization page /cookiemaintenance rv 0

2015-09-17 08:43:45.010552(3288) :MonitorPageAC::GetAlertConfigsForConfigID
internal.monitoring.drives.smartdrive

2015-09-17 08:43:45.010723(3288) :Found ruleset file internal.vlhrldmsprd01.7.ruleset.xml

2015-09-17 08:43:45.010753(3288) :Found ruleset file selbackup.ruleset.xml

2015-09-17 08:43:45.010780(3288) :RulesetParser::AddFile C:\Program Files
(x86)\LANDesk\Shared Files\cbaroot\alert\internal.vlhrldmsprd01.7.ruleset.xml

2015-09-17 08:43:45.011027(3340) :ProviderCon HTTP STATUS is (200)

2015-09-17 08:43:45.011050(3340) :SendPIDMessage gets collector response HTTP_OK

2015-09-17 08:43:45.011514(3288) :RulesetParser::AddRuleset

2015-09-17 08:43:45.011548(3288) :RulesetParser; ruleset tag found

2015-09-17 08:43:45.011566(3288) :RulesetParser; found alert id
internal.monitoring.drives.diskspace

2015-09-17 08:43:45.011587(3288) :RulesetParser; located & saved alert config for id internal.monitoring.drives.diskspace

2015-09-17 08:43:45.011601(3288) :RulesetParser::AddFile C:\Program Files (x86)\LANDesk\Shared Files\cbaroot\alert\selbackup.ruleset.xml

2015-09-17 08:43:45.011703(3288) :RulesetParser::AddRuleset

2015-09-17 08:43:45.011719(3288) :RulesetParser; ruleset tag found

2015-09-17 08:43:45.011731(3288) :RulesetParser; ruleset reject, managed attribute not found

2015-09-17 08:43:45.011743(3288) :RulesetParser::AddRuleset rejected by TagAndManage

2015-09-17 08:43:45.011768(3288) :MonitorPageAC::Initialize 0 configs found

2015-09-17 08:43:45.011782(3288) :MonitorPageAC::InitMonitoring 1 0 0

2015-09-17 08:43:45.011794(3288) :MonitorPageAC::CalculateTimersForConfiguration

2015-09-17 08:43:45.011806(3288) :MonitorPageAC::CalculateTimersForConfiguration calling CalculateTimers with options 3

2015-09-17 08:43:45.011819(3288) :MonitorPageAC::StartExternalTimers

2015-09-17 08:43:45.011831(3288) :MonitorPageAC::StartInternalTimers

2015-09-17 08:43:45.011850(3288) :MonitorPageAC::StartInitialTimers

2015-09-17 08:43:45.011861(3288) :MonitorPageAC::SaveCurrentConfiguration 1

2015-09-17 08:43:45.012126(3288) :LateInitialization page /drives/SMART/monitor rv 0

2015-09-17 08:43:45.012144(3288) :MonitorPageAC::GetAlertConfigsForConfigID internal.monitoring.configuration.disks

2015-09-17 08:43:45.012159(3288) :MonitorPageAC::Initialize 0 configs found

2015-09-17 08:43:45.012171(3288) :MonitorPageAC::InitMonitoring 1 0 0

2015-09-17 08:43:45.012183(3288) :MonitorPageAC::CalculateTimersForConfiguration

2015-09-17 08:43:45.012194(3288) :MonitorPageAC::CalculateTimersForConfiguration calling CalculateTimers with options 3

2015-09-17 08:43:45.012206(3288) :MonitorPageAC::StartExternalTimers

2015-09-17 08:43:45.012217(3288) :MonitorPageAC::StartInternalTimers

2015-09-17 08:43:45.012229(3288) :MonitorPageAC::StartInitialTimers

2015-09-17 08:43:45.012240(3288) :MonitorPageAC::SaveCurrentConfiguration 1

2015-09-17 08:43:45.012462(3288) :LateInitialization page /drives/addremove/monitor rv 0

2015-09-17 08:43:45.012479(3288) :LateInitialization page /drives/physical rv 0

2015-09-17 08:43:45.012491(3288) :LateInitialization page /drives/usage rv 0

2015-09-17 08:43:45.012503(3288) :MonitorPageAC::GetAlertConfigsForConfigID
internal.monitoring.drives.diskspace

2015-09-17 08:43:45.012525(3288) :ThresholdSpecification::ThresholdSpecification_Factory
sev yes set yes reset no

2015-09-17 08:43:45.012543(3288) :ThresholdSpecification::ThresholdSpecification_Factory
sev yes set yes reset no

2015-09-17 08:43:45.012559(3288) :AlertConfig::AlertConfig_Factory complete returning valid
config

2015-09-17 08:43:45.012585(3288) :MonitorPageAC::Initialize 1 configs found

2015-09-17 08:43:45.012597(3288) :MonitorPageAC::InitMonitoring 1 0 0

2015-09-17 08:43:45.012609(3288) :MonitorPageAC::CalculateTimersForConfiguration

2015-09-17 08:43:45.012620(3288) :MonitorPageAC::CalculateTimersForConfiguration calling
CalculateTimers with options 3

2015-09-17 08:43:45.012661(3288) :MonitorPageAC::StartExternalTimers

2015-09-17 08:43:45.012674(3288) :MonitorPageAC::StartExternalTimers starts <timer
type="MonitorDiskUsage">218</timer>

2015-09-17 08:43:45.013139(3288) :ProviderCon HTTP STATUS is (200)

2015-09-17 08:43:45.013170(3288) :MonitorPageAC::StartInternalTimers

2015-09-17 08:43:45.013186(3288) :MonitorPageAC::StartInitialTimers

2015-09-17 08:43:45.013198(3288) :MonitorPageAC::StartInitialTimers starts <timer
type="MonitorDiskUsage" init="1">218</timer>

2015-09-17 08:43:45.013601(3288) :ProviderCon HTTP STATUS is (200)

2015-09-17 08:43:45.013627(3288) :MonitorPageAC::SaveCurrentConfiguration 1

2015-09-17 08:43:45.014644(3288) :LateInitialization page /drives/usage/monitor rv 0

2015-09-17 08:43:45.014665(3288) :LateInitialization page /extalarm rv 0

2015-09-17 08:43:45.014678(3288) :LateInitialization page /heartbeat rv 0

2015-09-17 08:43:45.014690(3288) :LateInitialization page /index rv 0

2015-09-17 08:43:45.014701(3288) :LateInitialization page /schedule rv 0

2015-09-17 08:43:45.014713(3288) :LateInitialization page /shutdown rv 0

2015-09-17 08:43:45.014724(3288) :LateInitialization page /status rv 0

2015-09-17 08:43:45.014736(3288) :Releasing MasterConfig Cache

2015-09-17 08:43:45.014775(3288) :MonitorServer::TellCollectorAboutLateInitialization
zeroSuccessCode 0

2015-09-17 08:43:45.014791(3288) :MonitorServer::TellCollectorAboutLateInitialization
Requesting document: /inventory?file=LDdrives.exe&provstatus=1

2015-09-17 08:43:45.015190(3288) :ProviderCon HTTP STATUS is (200)

2015-09-17 08:43:45.015221(3288) :TellCollectorAboutLateInitialization gets collector response
HTTP_OK

2015-09-17 08:43:45.015253(3288) :WindowsInternalSelect calls WSAEventSelect

2015-09-17 08:43:45.015276(3288) :WindowsInternalSelect calls WSAWaitForMultipleEvents
(2 items)

2015-09-17 08:43:45.015290(3288) :WFMO gets rv 258

2015-09-17 08:43:45.015308(3288) :Select returns TIMEOUT

2015-09-17 08:43:45.015330(3288) :MonitorPageAC::MonitorNow 1 items

2015-09-17 08:43:45.015344(3288) :MonitorPageAC::AddAlertConfigAssociatedWithCookie
[<timer type="MonitorDiskUsage" init="1">218</timer>]

2015-09-17 08:43:45.015369(3288) :MonitorPageAC::AddAlertConfigAssociatedWithCookie
[<timer type="MonitorDiskUsage" init="1">218</timer>] matched a rule

2015-09-17 08:43:45.015412(3288) :MonitorDriveUsage::MonitorNow - for config 218,
instance count 1

2015-09-17 08:43:45.015429(3288) :MonitorDriveUsage: GetCurrentUsage for C

2015-09-17 08:43:45.015466(3288) :MonitorDriveUsage: GetCurrentUsage() for C;
GetDiskFreeSpaceEx fails

2015-09-17 08:43:45.015481(3288) :MonitorDriveUsage::MonitorNow - for config 218,
instance C, usage is 0

2015-09-17 08:43:45.015893(3288) :No threshold change detected

2015-09-17 08:43:45.016294(3288) :ProviderCon HTTP STATUS is (200)

2015-09-17 08:43:45.016341(3288) :WindowsInternalSelect calls WSAEventSelect

2015-09-17 08:43:45.016357(3288) :WindowsInternalSelect calls WSAWaitForMultipleEvents
(2 items)

2015-09-17 08:44:0.019099(3288) :WFMO gets rv 258

2015-09-17 08:44:0.019179(3288) :Select returns TIMEOUT

2015-09-17 08:44:0.019208(3288) :Exit if idle...

2015-09-17 08:44:0.019220(3288) :MonitorServer::AllMonitorsIdle

2015-09-17 08:44:0.019236(3288) :MonitorServer::AllMonitorsIdle returns true

2015-09-17 08:44:0.019247(3288) :Idle exit initiated

2015-09-17 08:44:0.019257(3288) :Call OnShutdown for page /cookiemaintenance

2015-09-17 08:44:0.019268(3288) :MonitorPage::OnPreShutdown requesting worker functions
to finish

2015-09-17 08:44:0.019280(3288) :Call OnShutdown for page /drives/SMART/monitor

2015-09-17 08:44:0.019290(3288) :MonitorPage::OnPreShutdown requesting worker functions
to finish

2015-09-17 08:44:0.019302(3288) :Call OnShutdown for page /drives/addremove/monitor

2015-09-17 08:44:0.019312(3288) :MonitorPage::OnPreShutdown requesting worker functions to finish

2015-09-17 08:44:0.019323(3288) :Call OnShutdown for page /drives/physical

2015-09-17 08:44:0.019334(3288) :MonitorPage::OnPreShutdown requesting worker functions to finish

2015-09-17 08:44:0.019345(3288) :Call OnShutdown for page /drives/usage

2015-09-17 08:44:0.019356(3288) :MonitorPage::OnPreShutdown requesting worker functions to finish

2015-09-17 08:44:0.019366(3288) :Call OnShutdown for page /drives/usage/monitor

2015-09-17 08:44:0.019377(3288) :MonitorPage::OnPreShutdown requesting worker functions to finish

2015-09-17 08:44:0.019388(3288) :Call OnShutdown for page /extalarm

2015-09-17 08:44:0.019399(3288) :MonitorPage::OnPreShutdown requesting worker functions to finish

2015-09-17 08:44:0.019409(3288) :Call OnShutdown for page /heartbeat

2015-09-17 08:44:0.019420(3288) :MonitorPage::OnPreShutdown requesting worker functions to finish

2015-09-17 08:44:0.019431(3288) :Call OnShutdown for page /index

2015-09-17 08:44:0.019441(3288) :MonitorPage::OnPreShutdown requesting worker functions to finish

2015-09-17 08:44:0.019453(3288) :Call OnShutdown for page /schedule

2015-09-17 08:44:0.019463(3288) :MonitorPage::OnPreShutdown requesting worker functions to finish

2015-09-17 08:44:0.019474(3288) :Call OnShutdown for page /shutdown

2015-09-17 08:44:0.019485(3288) :MonitorPage::OnPreShutdown requesting worker functions to finish

2015-09-17 08:44:0.019496(3288) :Call OnShutdown for page /status

2015-09-17 08:44:0.019507(3288) :MonitorPage::OnPreShutdown requesting worker functions to finish

2015-09-17 08:44:0.019518(3288) :Call OnShutdown for page /cookiemaintenance

2015-09-17 08:44:0.019529(3288) :MonitorPage::OnShutdown Waiting for worker function to finish now completed

2015-09-17 08:44:0.019539(3288) :Call OnShutdown for page /drives/SMART/monitor

2015-09-17 08:44:0.019550(3288) :MonitorPage::OnShutdown Waiting for worker function to finish now completed

2015-09-17 08:44:0.019561(3288) :Call OnShutdown for page /drives/addremove/monitor

2015-09-17 08:44:0.019572(3288) :MonitorPage::OnShutdown Waiting for worker function to finish now completed

2015-09-17 08:44:0.019583(3288) :Call OnShutdown for page /drives/physical

2015-09-17 08:44:0.019593(3288) :MonitorPage::OnShutdown Waiting for worker function to finish now completed

2015-09-17 08:44:0.019604(3288) :Call OnShutdown for page /drives/usage

2015-09-17 08:44:0.019617(3288) :MonitorPage::OnShutdown Waiting for worker function to finish now completed

2015-09-17 08:44:0.019629(3288) :Call OnShutdown for page /drives/usage/monitor

2015-09-17 08:44:0.019640(3288) :MonitorPage::OnShutdown Waiting for worker function to finish now completed

2015-09-17 08:44:0.019651(3288) :Call OnShutdown for page /extalarm

2015-09-17 08:44:0.019661(3288) :MonitorPage::OnShutdown Waiting for worker function to finish now completed

2015-09-17 08:44:0.019672(3288) :Call OnShutdown for page /heartbeat

2015-09-17 08:44:0.019683(3288) :MonitorPage::OnShutdown Waiting for worker function to finish now completed

2015-09-17 08:44:0.019694(3288) :Call OnShutdown for page /index

2015-09-17 08:44:0.019705(3288) :MonitorPage::OnShutdown Waiting for worker function to finish now completed

2015-09-17 08:44:0.019716(3288) :Call OnShutdown for page /schedule

2015-09-17 08:44:0.019726(3288) :MonitorPage::OnShutdown Waiting for worker function to finish now completed

2015-09-17 08:44:0.019737(3288) :Call OnShutdown for page /shutdown

2015-09-17 08:44:0.019748(3288) :MonitorPage::OnShutdown Waiting for worker function to finish now completed

2015-09-17 08:44:0.019759(3288) :Call OnShutdown for page /status

2015-09-17 08:44:0.019769(3288) :MonitorPage::OnShutdown Waiting for worker function to finish now completed

2015-09-17 08:44:0.019780(3288) :Shutdown request handled by default MonitorServer handler

2015-09-17 08:44:0.019791(3288) :MonitorServer::ShutdownListenSocket2015-09-17 08:44:0.019823(3288) :TCP/IP phase finished

2015-09-17 08:44:0.019842(3288) :Server finished

2015-09-17 08:44:0.019890(3288) :Shutdown...

2015-09-17 08:48:45.000006(2196) :App name is [LDdrives.exe]

2015-09-17 08:48:45.000132(2196) :Verbosity level is 00ff

2015-09-17 08:48:45.000170(2196) :Arg:0,LDdrives.exe

2015-09-17 08:48:45.000199(2196) :Arg:1,-p

2015-09-17 08:48:45.000227(2196) :Arg:2,51205

2015-09-17 08:48:45.000253(2196) :Arg:3,-c

2015-09-17 08:48:45.000279(2196) :Arg:4,-s

2015-09-17 08:48:45.000304(2196) :Arg:5,-V255

2015-09-17 08:48:45.000330(2196) :Arg:6,-lc:\lddrives.log

2015-09-17 08:48:45.000485(2196) :Unicorn::TheOne acquired unique event

2015-09-17 08:48:45.000564(2196) :Stats not requested

2015-09-17 08:48:45.000658(2196) :Server started

2015-09-17 08:48:45.000698(2196) :MonitorServer::SetupListenSocket

2015-09-17 08:48:45.001420(2196) :STDIO phase skipped

2015-09-17 08:48:45.001831(2196) :TCP/IP phase started

2015-09-17 08:48:45.001870(2196) :MonitorServer::LateProviderInitialization

2015-09-17 08:48:45.001905(2196) :LateInitialization page /cookiemaintenance rv 0

2015-09-17 08:48:45.001936(2196) :MonitorPageAC::GetAlertConfigsForConfigID
internal.monitoring.drives.smartdrive

2015-09-17 08:48:45.002341(2196) :Found ruleset file internal.vlhrldmsprd01.7.ruleset.xml

2015-09-17 08:48:45.002398(2196) :Found ruleset file selbackup.ruleset.xml

2015-09-17 08:48:45.002464(2196) :RulesetParser::AddFile C:\Program Files
(x86)\LANDesk\Shared Files\cbaroot\alert\internal.vlhrldmsprd01.7.ruleset.xml

2015-09-17 08:48:45.003954(2196) :RulesetParser::AddRuleset

2015-09-17 08:48:45.003994(2196) :RulesetParser; ruleset tag found

2015-09-17 08:48:45.004038(2196) :RulesetParser; found alert id
internal.monitoring.drives.diskspace

2015-09-17 08:48:45.004071(2196) :RulesetParser; located & saved alert config for id
internal.monitoring.drives.diskspace

2015-09-17 08:48:45.004104(2196) :RulesetParser::AddFile C:\Program Files
(x86)\LANDesk\Shared Files\cbaroot\alert\selbackup.ruleset.xml

2015-09-17 08:48:45.004319(2196) :RulesetParser::AddRuleset

2015-09-17 08:48:45.004355(2196) :RulesetParser; ruleset tag found

2015-09-17 08:48:45.004384(2196) :RulesetParser; ruleset reject, managed attribute not found

2015-09-17 08:48:45.004410(2196) :RulesetParser::AddRuleset rejected by TagAndManage

2015-09-17 08:48:45.004467(2196) :MonitorPageAC::Initialize 0 configs found

2015-09-17 08:48:45.004496(2196) :MonitorPageAC::InitMonitoring 0 0 0

2015-09-17 08:48:45.004526(2196) :LateInitialization page /drives/SMART/monitor rv 0

2015-09-17 08:48:45.004605(2196) :MonitorPageAC::GetAlertConfigsForConfigID
internal.monitoring.configuration.disks

2015-09-17 08:48:45.004645(2196) :MonitorPageAC::Initialize 0 configs found

2015-09-17 08:48:45.004672(2196) :MonitorPageAC::InitMonitoring 0 0 0

2015-09-17 08:48:45.004699(2196) :LateInitialization page /drives/addremove/monitor rv 0

2015-09-17 08:48:45.004727(2196) :LateInitialization page /drives/physical rv 0

2015-09-17 08:48:45.004754(2196) :LateInitialization page /drives/usage rv 0

2015-09-17 08:48:45.004781(2196) :MonitorPageAC::GetAlertConfigsForConfigID
internal.monitoring.drives.diskspace

2015-09-17 08:48:45.004834(2196) :ThresholdSpecification::ThresholdSpecification_Factory
sev yes set yes reset no

2015-09-17 08:48:45.004874(2196) :ThresholdSpecification::ThresholdSpecification_Factory
sev yes set yes reset no

2015-09-17 08:48:45.004912(2196) :AlertConfig::AlertConfig_Factory complete returning valid
config

2015-09-17 08:48:45.004969(2196) :MonitorPageAC::Initialize 1 configs found

2015-09-17 08:48:45.004998(2196) :MonitorPageAC::InitMonitoring 0 0 0

2015-09-17 08:48:45.005025(2196) :LateInitialization page /drives/usage/monitor rv 0

2015-09-17 08:48:45.005053(2196) :LateInitialization page /extalarm rv 0

2015-09-17 08:48:45.005080(2196) :LateInitialization page /heartbeat rv 0

2015-09-17 08:48:45.005107(2196) :LateInitialization page /index rv 0

2015-09-17 08:48:45.005133(2196) :LateInitialization page /schedule rv 0

2015-09-17 08:48:45.005161(2196) :LateInitialization page /shutdown rv 0

2015-09-17 08:48:45.005187(2196) :LateInitialization page /status rv 0

2015-09-17 08:48:45.005214(2196) :Releasing MasterConfig Cache

2015-09-17 08:48:45.005341(2196) :Signal requested

2015-09-17 08:48:45.005374(2196) :Trying to OpenEvent [landesk.provider.accept.event.51205]

2015-09-17 08:48:45.005414(2196) :Sync Signal sent

2015-09-17 08:48:45.005442(2196) :WindowsInternalSelect calls WSAEventSelect

2015-09-17 08:48:45.005473(2196) :WindowsInternalSelect calls WSAWaitForMultipleEvents (2 items)

2015-09-17 08:48:45.005502(2196) :WFMO gets rv 258

2015-09-17 08:48:45.005526(2196) :Select returns TIMEOUT

2015-09-17 08:48:45.005700(2196) :WindowsInternalSelect calls WSAEventSelect

2015-09-17 08:48:45.005746(2196) :WindowsInternalSelect calls WSAWaitForMultipleEvents (2 items)

2015-09-17 08:48:45.005824(1172) :StatusPage::SendPIDMessage

2015-09-17 08:48:45.005889(1172) :MonitorPage::SendESCommand Requesting document: /inventory?file=LDdrives.exe&pid=1600

2015-09-17 08:48:45.006359(2196) :WFMO gets rv 1

2015-09-17 08:48:45.006405(2196) :Select returns ACCEPT SOCKET CONNECTION

2015-09-17 08:48:45.006529(2196) :MonitorServer::AcceptConnection

2015-09-17 08:48:45.006748(2196) :MonitorServer::FindPage(/extalarm)

2015-09-17 08:48:45.006782(2196) :Accept connection executes in master process/thread for page /extalarm

2015-09-17 08:48:45.006859(2196) :MonitorServer::ForwardESWakeup (/drives/usage/monitor,<timer type="MonitorDiskUsage">218</timer>)

2015-09-17 08:48:45.006891(2196) :MonitorServer::FindPage(/drives/usage/monitor)

2015-09-17 08:48:45.006920(2196) :MonitorServer::ForwardESWakeup found matching page, forwarding

2015-09-17 08:48:45.006947(2196) :MonitorPageAC::ExternalWakeupRecieved

2015-09-17 08:48:45.006941(1172) :ProviderCon HTTP STATUS is (200)

2015-09-17 08:48:45.006975(2196) :MonitorPageAC::AddAlertConfigAssociatedWithCookie
[<timer type="MonitorDiskUsage">218</timer>]

2015-09-17 08:48:45.007023(1172) :SendPIDMessage gets collector response HTTP_OK

2015-09-17 08:48:45.007090(2196) :MonitorPageAC::AddAlertConfigAssociatedWithCookie
[<timer type="MonitorDiskUsage">218</timer>] matched a rule

2015-09-17 08:48:45.007189(2196) :MonitorDriveUsage::MonitorNow - for config 218,
instance count 1

2015-09-17 08:48:45.007227(2196) :MonitorDriveUsage: GetCurrentUsage for C

2015-09-17 08:48:45.007297(2196) :MonitorDriveUsage: GetCurrentUsage() for C;
GetDiskFreeSpaceEx fails

2015-09-17 08:48:45.007330(2196) :MonitorDriveUsage::MonitorNow - for config 218,
instance C, usage is 0

2015-09-17 08:48:45.008324(2196) :No threshold change detected

2015-09-17 08:48:45.008411(2196) :WindowsInternalSelect calls WSAEventSelect

2015-09-17 08:48:45.008449(2196) :WindowsInternalSelect calls WSAWaitForMultipleEvents
(2 items)

2015-09-17 08:49:45.008294(2196) :WFMO gets rv 258

2015-09-17 08:49:45.008384(2196) :Select returns TIMEOUT

2015-09-17 08:49:45.008492(2196) :Exit if idle...

2015-09-17 08:49:45.008523(2196) :MonitorServer::AllMonitorsIdle

2015-09-17 08:49:45.008553(2196) :MonitorServer::AllMonitorsIdle returns true

2015-09-17 08:49:45.008579(2196) :Idle exit initiated

2015-09-17 08:49:45.008603(2196) :Call OnShutdown for page /cookiemaintenance

2015-09-17 08:49:45.008631(2196) :MonitorPage::OnPreShutdown requesting worker functions
to finish

2015-09-17 08:49:45.008658(2196) :Call OnShutdown for page /drives/SMART/monitor

2015-09-17 08:49:45.008684(2196) :MonitorPage::OnPreShutdown requesting worker functions to finish

2015-09-17 08:49:45.008711(2196) :Call OnShutdown for page /drives/addremove/monitor

2015-09-17 08:49:45.008737(2196) :MonitorPage::OnPreShutdown requesting worker functions to finish

2015-09-17 08:49:45.008763(2196) :Call OnShutdown for page /drives/physical

2015-09-17 08:49:45.008789(2196) :MonitorPage::OnPreShutdown requesting worker functions to finish

2015-09-17 08:49:45.008817(2196) :Call OnShutdown for page /drives/usage

2015-09-17 08:49:45.008842(2196) :MonitorPage::OnPreShutdown requesting worker functions to finish

2015-09-17 08:49:45.008870(2196) :Call OnShutdown for page /drives/usage/monitor

2015-09-17 08:49:45.008896(2196) :MonitorPage::OnPreShutdown requesting worker functions to finish

2015-09-17 08:49:45.008923(2196) :Call OnShutdown for page /extalarm

2015-09-17 08:49:45.008949(2196) :MonitorPage::OnPreShutdown requesting worker functions to finish

2015-09-17 08:49:45.008976(2196) :Call OnShutdown for page /heartbeat

2015-09-17 08:49:45.009002(2196) :MonitorPage::OnPreShutdown requesting worker functions to finish

2015-09-17 08:49:45.009029(2196) :Call OnShutdown for page /index

2015-09-17 08:49:45.009054(2196) :MonitorPage::OnPreShutdown requesting worker functions to finish

2015-09-17 08:49:45.009082(2196) :Call OnShutdown for page /schedule

2015-09-17 08:49:45.009107(2196) :MonitorPage::OnPreShutdown requesting worker functions to finish

2015-09-17 08:49:45.009134(2196) :Call OnShutdown for page /shutdown

2015-09-17 08:49:45.009160(2196) :MonitorPage::OnPreShutdown requesting worker functions to finish

2015-09-17 08:49:45.009187(2196) :Call OnShutdown for page /status

2015-09-17 08:49:45.009214(2196) :MonitorPage::OnPreShutdown requesting worker functions to finish

2015-09-17 08:49:45.009241(2196) :Call OnShutdown for page /cookiemaintenance

2015-09-17 08:49:45.009267(2196) :MonitorPage::OnShutdown Waiting for worker function to finish now completed

2015-09-17 08:49:45.009294(2196) :Call OnShutdown for page /drives/SMART/monitor

2015-09-17 08:49:45.009320(2196) :MonitorPage::OnShutdown Waiting for worker function to finish now completed

2015-09-17 08:49:45.009347(2196) :Call OnShutdown for page /drives/addremove/monitor

2015-09-17 08:49:45.009374(2196) :MonitorPage::OnShutdown Waiting for worker function to finish now completed

2015-09-17 08:49:45.009401(2196) :Call OnShutdown for page /drives/physical

2015-09-17 08:49:45.009427(2196) :MonitorPage::OnShutdown Waiting for worker function to finish now completed

2015-09-17 08:49:45.009454(2196) :Call OnShutdown for page /drives/usage

2015-09-17 08:49:45.009480(2196) :MonitorPage::OnShutdown Waiting for worker function to finish now completed

2015-09-17 08:49:45.009507(2196) :Call OnShutdown for page /drives/usage/monitor

2015-09-17 08:49:45.009533(2196) :MonitorPage::OnShutdown Waiting for worker function to finish now completed

2015-09-17 08:49:45.009559(2196) :Call OnShutdown for page /extalarm

2015-09-17 08:49:45.009585(2196) :MonitorPage::OnShutdown Waiting for worker function to finish now completed

2015-09-17 08:49:45.009612(2196) :Call OnShutdown for page /heartbeat

2015-09-17 08:49:45.009642(2196) :MonitorPage::OnShutdown Waiting for worker function to finish now completed

2015-09-17 08:49:45.009672(2196) :Call OnShutdown for page /index

2015-09-17 08:49:45.009698(2196) :MonitorPage::OnShutdown Waiting for worker function to finish now completed

2015-09-17 08:49:45.009725(2196) :Call OnShutdown for page /schedule

2015-09-17 08:49:45.009751(2196) :MonitorPage::OnShutdown Waiting for worker function to finish now completed

2015-09-17 08:49:45.009778(2196) :Call OnShutdown for page /shutdown

2015-09-17 08:49:45.009804(2196) :MonitorPage::OnShutdown Waiting for worker function to finish now completed

2015-09-17 08:49:45.009831(2196) :Call OnShutdown for page /status

2015-09-17 08:49:45.009857(2196) :MonitorPage::OnShutdown Waiting for worker function to finish now completed

2015-09-17 08:49:45.009884(2196) :Shutdown request handled by default MonitorServer handler

2015-09-17 08:49:45.009910(2196) :MonitorServer::ShutdownListenSocket2015-09-17 08:49:45.009974(2196) :TCP/IP phase finished

2015-09-17 08:49:45.010004(2196) :Server finished

2015-09-17 08:49:45.010086(2196) :Shutdown...

This document was generated from the following discussion: [Landesk Drive Space Alerts not being triggered](#)